

• Metal slitting saws

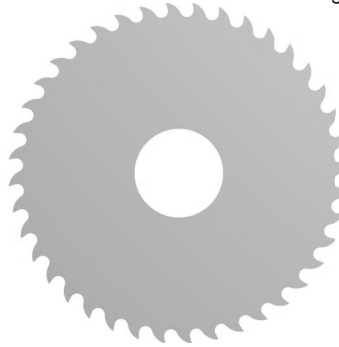
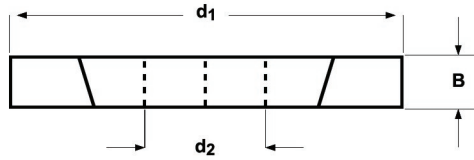
• Metallkreissägeblätter

• Metaalzagen

• Fraises scies

• Sierras de ranurar o tronzar

• Serras Circulares p/ Abertura de Rasgos



D745



HSS



**DIN
1838**



■ 1.1 1.2 1.3 2.1 3.1 3.2 3.3 4.1 4.2 5.1 5.2 6.1 6.2 6.3 7.1 7.2 7.3 8.1

d ₁ Ø mm	B	d ₂ Ø mm	z	e-Code	d ₁ Ø mm	B	d ₂ Ø mm	z	e-Code
50	0,5	13	48	D74550.0X.5	100	4,0	22	40	D745100.0X4.0
50	0,6	13	48	D74550.0X.6	100	5,0	22	40	D745100.0X5.0
50	0,8	13	50	D74550.0X.8	100	6,0	22	32	D745100.0X6.0
50	1,0	13	40	D74550.0X1.0	125	1,0	22	80	D745125.0X1.0
50	1,2	13	40	D74550.0X1.2	125	1,2	22	64	D745125.0X1.2
50	1,5	13	32	D74550.0X1.5	125	1,5	22	64	D745125.0X1.5
50	1,6	13	32	D74550.0X1.6	125	1,6	22	64	D745125.0X1.6
50	2,0	13	32	D74550.0X2.0	125	2,0	22	64	D745125.0X2.0
50	2,5	13	32	D74550.0X2.5	125	2,5	22	48	D745125.0X2.5
50	3,0	13	24	D74550.0X3.0	125	3,0	22	48	D745125.0X3.0
63	0,5	16	64	D74563.0X.5	125	4,0	22	48	D745125.0X4.0
63	0,6	16	48	D74563.0X.6	125	5,0	22	40	D745125.0X5.0
63	0,8	16	48	D74563.0X.8	125	6,0	22	40	D745125.0X6.0
63	1,0	16	48	D74563.0X1.0	160	1,0	32	80	D745160.0X1.0
63	1,2	16	40	D74563.0X1.2	160	1,2	32	80	D745160.0X1.2
63	1,5	16	40	D74563.0X1.5	160	1,5	32	80	D745160.0X1.5
63	1,6	16	40	D74563.0X1.6	160	1,6	32	80	D745160.0X1.6
63	2,0	16	40	D74563.0X2.0	160	2,0	32	64	D745160.0X2.0
63	2,5	16	32	D74563.0X2.5	160	2,5	32	64	D745160.0X2.5
63	3,0	16	32	D74563.0X3.0	160	3,0	32	64	D745160.0X3.0
80	0,5	22	64	D74580.0X.5	160	4,0	32	48	D745160.0X4.0
80	0,6	22	64	D74580.0X.6	160	5,0	32	48	D745160.0X5.0
80	0,8	22	64	D74580.0X.8	160	6,0	32	48	D745160.0X6.0
80	1,0	22	48	D74580.0X1.0	200	1,0	32	100	D745200.0X1.0
80	1,2	22	48	D74580.0X1.2	200	1,2	32	100	D745200.0X1.2
80	1,5	22	48	D74580.0X1.5	200	1,5	32	80	D745200.0X1.5
80	1,6	22	48	D74580.0X1.6	200	1,6	32	80	D745200.0X1.6
80	2,0	22	40	D74580.0X2.0	200	2,0	32	80	D745200.0X2.0
80	2,5	22	40	D74580.0X2.5	200	2,5	32	80	D745200.0X2.5
80	3,0	22	40	D74580.0X3.0	200	3,0	32	64	D745200.0X3.0
80	4,0	22	32	D74580.0X4.0	200	4,0	32	64	D745200.0X4.0
80	5,0	22	32	D74580.0X5.0	200	5,0	32	64	D745200.0X5.0
80	6,0	22	32	D74580.0X6.0	200	6,0	32	48	D745200.0X6.0
100	0,5	22	80	D745100.0X.5	250	2,0	32	80	D745250.0X2.0
100	0,6	22	80	D745100.0X.6	250	2,5	32	80	D745250.0X2.5
100	0,8	22	64	D745100.0X.8	250	3,0	32	80	D745250.0X3.0
100	1,0	22	64	D745100.0X1.0	250	4,0	32	80	D745250.0X4.0
100	1,2	22	64	D745100.0X1.2	250	5,0	32	64	D745250.0X5.0
100	1,5	22	48	D745100.0X1.5	250	6,0	32	64	D745250.0X6.0
100	1,6	22	48	D745100.0X1.6	315	2,5	40	100	D745315.0X2.5
100	2,0	22	48	D745100.0X2.0	315	3,0	40	100	D745315.0X3.0
100	2,5	22	48	D745100.0X2.5					
100	3,0	22	40	D745100.0X3.0					