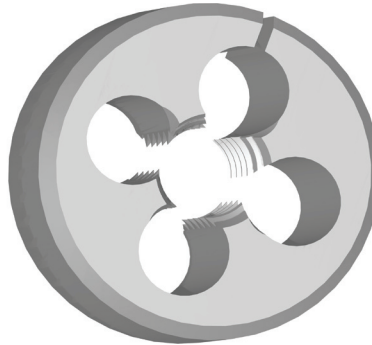
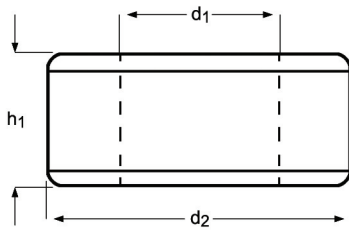


- Adjustable Dies
- Schneideisen, einstellbar
- Verstelbare snijplaten
- Filières extensibles
- Terraja tipo abierto
- Caçonetes Ajustáveis



## F330



- 1.1 1.2 1.3 3.1 3.2 3.3 7.1 7.2 7.3
- 1.4 2.1 2.2 3.4 4.3 5.1 5.2 5.3 6.1 6.2 6.3 7.4 8.1 8.2 8.3

UNF	TPI	$d_1$ nom mm	$d_2$ $\varnothing$ Inch /	$h_1$ Inch	e-Code	UNF	TPI	$d_1$ nom mm	$d_2$ $\varnothing$ Inch /	$h_1$ Inch	e-Code
0	80	1,52	13/16	1/4	F3300-80X13/16	7/16	20	11,11	1.	3/8	F3307/16X1
2	64	2,18	13/16	1/4	F3302-64X13/16	7/16	20	11,11	1.5/16	7/16	F3307/16X1.5/16
4	48	2,85	13/16	1/4	F3304-48X13/16	7/16	20	11,11	1.1/2	1/2	F3307/16X1.1/2
5	44	3,18	13/16	1/4	F3305-44X13/16	1/2	20	12,70	1.5/16	7/16	F3301/2X1.5/16
6	40	3,51	13/16	1/4	F3306-40X13/16	1/2	20	12,70	1.1/2	1/2	F3301/2X1.1/2
8	36	4,17	13/16	1/4	F3308-36X13/16	9/16	18	14,29	1.5/16	7/16	F3309/16X1.5/16
10	32	4,83	13/16	1/4	F33010-32X13/16	9/16	18	14,29	1.1/2	1/2	F3309/16X1.1/2
10	32	4,83	1.	3/8	F33010-32X1	5/8	18	15,88	1.1/2	1/2	F3305/8X1.1/2
12	28	5,49	13/16	1/4	F33012-28X13/16	5/8	18	15,88	2.	5/8	F3305/8X2
1/4	28	6,35	13/16	1/4	F3301/4X13/16	3/4	16	19,05	1.1/2	1/2	F3303/4X1.1/2
1/4	28	6,35	1.	3/8	F3301/4X1	3/4	16	19,05	2.	5/8	F3303/4X2
1/4	28	6,35	1.1/2	1/2	F3301/4X1.1/2	7/8	14	22,23	2.	5/8	F3307/8X2
5/16	24	7,94	1.	3/8	F3305/16X1	1.	12	25,40	2.	5/8	F3301X2
5/16	24	7,94	1.5/16	7/16	F3305/16X1.5/16	1.1/8	12	28,58	3.	7/8	F3301.1/8X3
5/16	24	7,94	1.1/2	1/2	F3305/16X1.1/2	1.1/4	12	31,75	3.	7/8	F3301.1/4X3
3/8	24	9,53	1.	3/8	F3303/8X1	1.1/2	12	38,10	3.	7/8	F3301.1/2X3
3/8	24	9,53	1.5/16	7/16	F3303/8X1.5/16						
3/8	24	9,53	1.1/2	1/2	F3303/8X1.1/2						